



GRÉGOIRE
BESSON



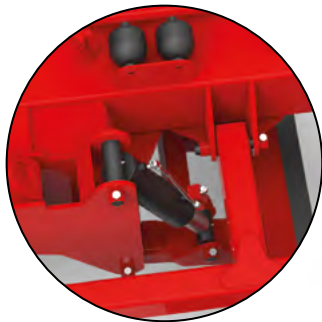
COVER XL T80

SEMI-MOUNTED X-PROFILE OFFSET DISC HARROW

COVER XL T80

SEMI-MOUNTED X-PROFILE OFFSET DISC HARROW

66 to 106 discs - Tractors: 310 to 400 hp - Working width: 7.30 to 12.00 m



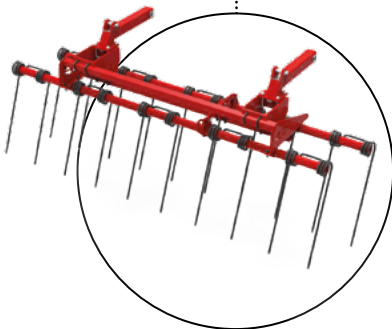
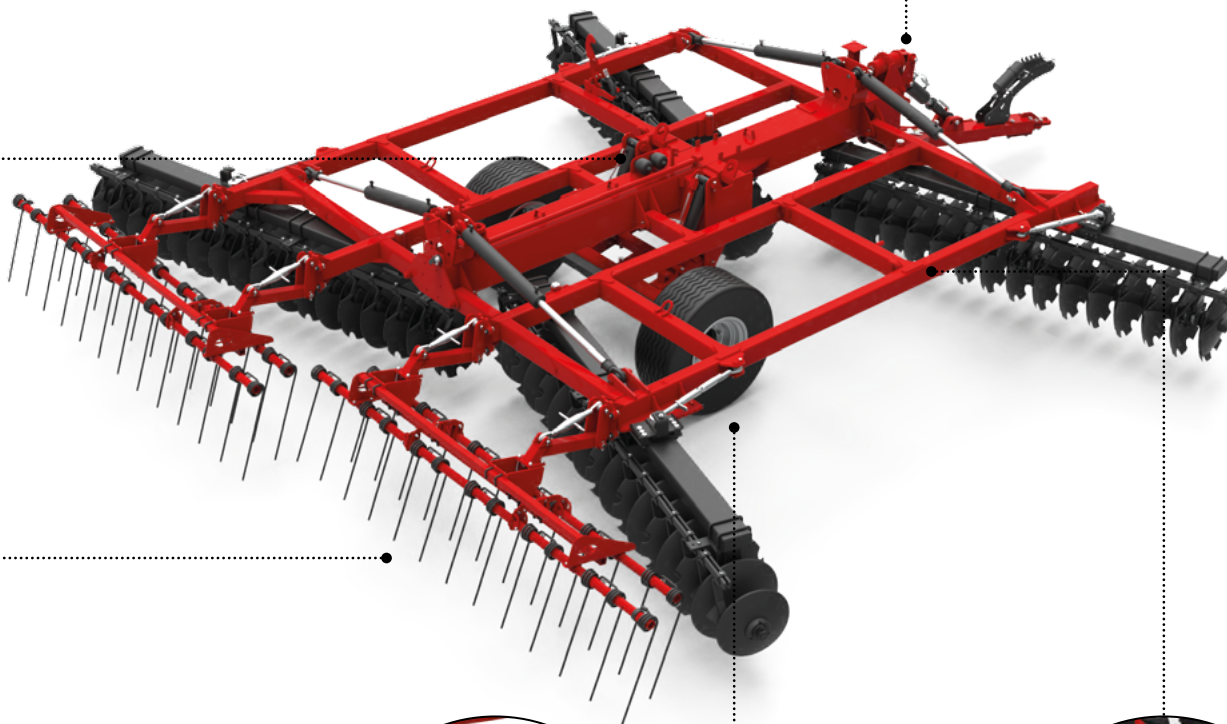
Axle suspension

An accumulator on the support axle cylinder provides you with the best possible road handling conditions.



Drawbar suspension

Elastomer around the drawbar cylinder allows flexibility during transport and in the field. An accumulator is connected to the wheel axle to protect your machine and for easy handling.



Rear equipment

Three types of rear rollers are available according to your needs: square bar rollers for a simple solution, double bar rollers for surface crumbling, and the Impak roller, ideal for self-seeding. This enables good soil consolidation. Finally, you can choose a triple following harrow to accelerate the destruction of weed root systems.



Depth control wheels

This solution enables you to pass through any type of terrain. Depth control wheels avoid roller jamming as the weight of the machine does not push the roller into the ground. In dry conditions you have the choice between wheels and rollers for a high level of stability.



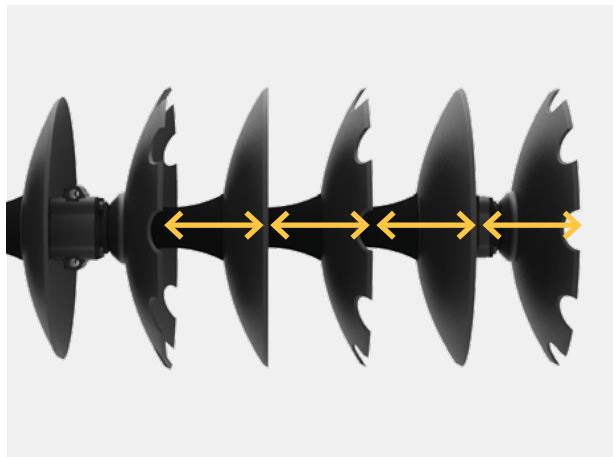
Stabilizing wheel

After a certain width, it is better to have a wheel on the right lateral support to stabilize the machine so that it maintains the same working depth at all speeds.



Consistent ground levelling

On the front disc gangs, you have the option of using a deflector and an anti-projection disc to control the ground projection and the outer disc depth. Combined with the graduated mounting of the rear disc gangs you achieve a perfectly levelled field.



Several spacings

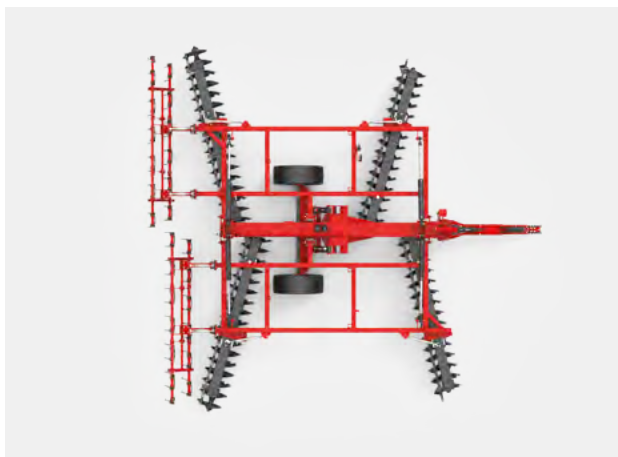
Depending on your needs, we offer two disc spacings. The 195 mm spacing is for fine work, recommended for shallow depths and the 230 mm spacing for more versatile use with summer stubble tillage and destruction of complex root systems.



Durable bearings

The compact, cast iron housing means that it will not interfere with the passage of residues. This minimizes jamming.

Thanks to triple sealed packing and two outward-facing seals, excess grease can escape but dust and debris cannot enter. This system extends service life and reduces maintenance to a minimum.



X design

The disc gangs are offset for uniform work across the entire working surface. This also allows perfect symmetry between the right and left side in order to balance pulling forces. X-profile Disc gangs are versatile and work well on land with few contours.



Bearing protection

A bearing protection guard is recommended for very stony conditions. The aim is to preserve the bearing from wear and tear due to ground friction but also from impacts caused by foreign objects in the field.



Several hitching types

Two hitching types are available: a turning ring hitch for the eye bolt or the drawbar, or a Cat 2 and 3N arm coupling to improve manoeuvring in headlands thanks to the wide turning circle.

COVER XL T80 TECHNICAL SPECIFICATIONS

	7.30	7.75	8.20	9.10	10.00	12.00
Working width (m)						
Tractor power (HP) <i>Tractor power (kW)</i>	310 / 350 228 / 257	320 / 360 235 / 265	330 / 370 243 / 272	340 / 380 250 / 279	350 / 390 257 / 287	360 / 400 265 / 294
Transport width (m)	3.49					
Transport height (m)	4.80					
Indicative weight (kg)	10 000	10 320	10 640	11 260	11 880	12 950
Yoke hitch type (Cat.)	Cast ring ball joint: Ø 45 mm - Ø 55 mm - Ø 65 mm / Scharmüller K80					
Chassis version	Can be folded in three parts					
Number of discs	66	70	74	82	90	106
Diamètre de l'arbre de disque (mm)	40					
Disc diameters (mm)	Standard Ø 660 / Option Ø 710					
Disc thicknesses (mm)	7 mm at the front and 6 mm at the back					
Spacing between discs (mm)	230					
Under frame clearance (mm)	800					
Max. working depth (mm)	200					
Working part safety system	Fixed seating					
Disc angle adjustment	Manual standard with locking device					
Stabilizing wheel	Without					
Tyres	560/60x22.5 (Ø 1243 mm)					
Brakes	Standard hydraulique / Option tyre					
Seed drill walkway	Not available					
Hectare counter	Option					
Roller adjustment	Mechanical tie rod					
Rear equipment (mm)	Standard sans / Optional double following harrow / Rear hook					
Road traffic lights	As standard					